

Ar gyfer oedolion, plant & phobl ifanc

For adults, children & young people

Male Domestic Abuse Support in Ceredigion



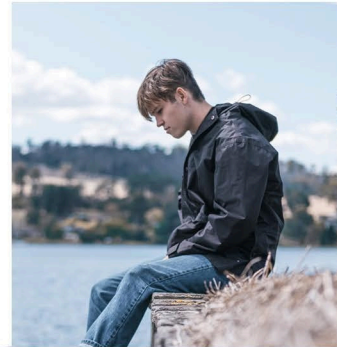
Contact us on our
24 hour helpline

CEREDIGION
01970 625 585

REFERRALS@WESTWALESADAS.ORG.UK
www.westwalesdas.org.uk

West Wales Domestic Abuse Service (WWDAS) has been working with men who have experienced domestic abuse since 2015.

We provide information and support to men experiencing domestic abuse from their current or former partner (including same-sex partner) or family member



What Is Domestic Abuse?

Abuse ranges from physical violence to emotional abuse such as constant bullying or insults.

It could be that you are being stopped from seeing friends and family, are being humiliated or receiving false allegations against you.

You may not have control over your money or have had debts run up in your name.

You may have been pressured into sex.



We work with all types of male victims of domestic abuse across all age ranges, sexual orientations and professions.

We provide:

- One to one support
- Support with benefits
- Help with reporting any abuse to the relevant authorities
- Safe housing and male only space.

Call us at WWDAS. We will listen and can provide you with support, practical information and signposting.



Find us online



Charity No. 1131539

Company No. 06926414

Our helpline is run
24 hours a day

Ceredigion
01970 625 585



Gwasanaeth cam-drin domestig
Gorllewin Cymru

West Wales
Domestic abuse service

Ar gyfer oedolion, plant & phobl ifanc

For adults, children & young people

Cymorth ar gyfer Dynion sy'n dioddef Cam-drin Domestig yng Ngheredigion



**Ffoniwch ni ar ein llinell
gymorth 24 awr**

**CEREDIGION
01970 625 585**

REFERRALS@WESTWALESADAS.ORG.UK

www.westwalesdas.org.uk

Mae Gwasanaeth Cam-drin Domestig Gorllewin Cymru (WWDAS) wedi bod yn gweithio gyda dynion sydd wedi dioddef cam-drin domestig ers 2015.

Rydym yn rhoi gwybodaeth a chymorth i ddynion sy'n dioddef cam-drin domestig gan eu partner presennol neu gyn-bartner (gan gynnwys partner o'r un rhyw) neu aelod o'r teulu.



Beth yw Cam-drin Domestig?
Mae cam-drin yn amrywio o drais corfforol i gam-drin emosiynol fel bwlio cyson neu sarhau.

Efallai eich bod yn cael eich atal rhag gweld ffrindiau a theulu, yn cael eich bychanu neu'n destun honiadau ffug.

Efallai nad oes gennych reolaeth dros eich arian neu efallai fod gennych ddyledion yn eich enw chi.

Efallai eich bod wedi cael eich rhoi dan bwysau i gael rhyw.



Rydym ni gweithio gyda phob math o ddynion sy'n dioddef cam-drin domestig ar draws pob ystod oedran a phroffesiwn.

Rydym yn darparu:

- Cefnogaeth un i un
- Cymorth gyda budd-daliadau
- Help i roi gwybod am unrhyw gamdriniaeth i'r awdurdodau perthnasol
- Tai diogel a gofod i ddynion yn unig

Ffoniwch ni yn WWDAS. Byddwn yn gwrando ac yn gallu rhoi cefnogaeth, gwybodaeth ymarferol a'ch cyfeirio i'r llefydd cywir.



Dewch o hyd i ni ar-lein



Rhif Elusen: 1131539

Rhif Cyfyngedig 06926414

Mae ein llinell gymorth yn cael ei rhedeg 24 awr y

Ceredigion
01970 625 585